

Are you ready for Oct 1, 2020?

Part 2: Practical Considerations for Implementing Outdoor EMV

December 12, 2019

Agenda

- Housekeeping
- Presenters
- About Connexus
- Presentation
- Q & A

Housekeeping

This webinar is being recorded and will be made available in about 7 days.

- YouTube (youtube.com/conexxusonline)
- Website Link (conexxus.org)

Slide Deck

- Survey Link – Presentation provided at end

Participants

- Ask questions via webinar interface
- Please, no vendor specific questions
- Our webinars may be used toward PCI continuing education credits. Please contact arussell@conexxus.org for questions regarding a certificate of webinar attendance.

Email: info@conexxus.org

Presenters

Conexxus Host



Allie Russell
Standards Coordinator
Conexxus
arussell@conexxus.org

Moderator



Gray Taylor
Executive Director
Conexxus
gtaylor@conexxus.org

Speakers



Dan Harrell
CIO & CSO
Invenco
dan.harrell@invenco.com



Dan Witkemper
Director, NA Payment
Gilbarco
dan.witkemper@gilbarco.com



Russ Haecker
EMV Business Leader
Dover Fueling Solutions
russ.haecker@doverfs.com

About Conexus

- **We are an independent, non-profit, member driven technology organization**
- **We set standards...**
 - Data exchange
 - Security
 - Mobile commerce
- **We provide vision**
 - Identify emerging tech/trends
- **We advocate for our industry**
 - Technology is policy



2019-2020 Conexxus Webinar Schedule

Month/Date	Webinar Title	Speakers	Company
November 14, 2019	Impending Consumer Privacy Laws	Alan Thiemann Paige Anderson	Conexxus NACS
November 21, 2019	Applicability of PCI DSS requirements for Merchants and MNSP's	Sam Pfanstiel	ControlScan
December 5, 2019	EMV Part 1: EMV Fundamentals and the Risk of Not Upgrading	Brian Russell Linda Toth Robert Alandt	Verifone Conexxus Visa
December 12, 2019	EMV Part 2: Practical Considerations for Implementing Outdoor EMV	Gray Taylor Russ Haecker Dan Harrell Dan Witkemper	Conexxus Dover Fueling Invenco Gilbarco
January 23, 2020	How to Elevate Your Business Through Digital Transformation	TBD	Cybera

2020 Conexxus Annual Conference

April 26 – April 30, 2020

**Loews Ventana Canyon
Tucson, AZ**

More about Sponsorship Opportunities
& Registration: www.Conexxus.org



Conexxus thanks our 2019 Annual Diamond Sponsors!



Today's EMV Takeaways...

- EMV will change how merchants do business and maintain their equipment
- EMV is about fraud prevention and cost avoidance (insurance against chargebacks)
- Waiting to upgrade to EMV may result in undesired consequences

Outdoor EMV MARKET SUMMARY

Outdoor
liability shift
begins
Oct. 2020



Card brands
confirm
deadline will
not shift



Some large
retailers
already on
upgrade path



High dollar
investment
required

60% of U.S.
market are
“Single Site
Owners”



“Some” SSOs
nervous
about
chargebacks
...others not

EMV L3
certification
is gating
step...



Hardware
suppliers
must be \geq
PCI 4.x by
April 2020

No incentives
from refiners
or MOCs for
to upgrade



EMV-ready
hardware on
~35% of
installed
base

ASO tech
deficit for
upgrade
support by
deadline



Labor costs
will increase
closer to
deadline

...but is
driven by
customers
and POS
vendors

North
America
(U.S.)

Fraud at the Dispenser

What it may cost you and how to fight it



The Fraud is Very Real

\$400M+



In outdoor CC
fraud every year
using skimming
devices

*Secret Service alone recovers
20 to 30 skimmers a week, each
holding information for about 80
payment cards*

Gas pump skimmers are getting worse because there's more technology to look for skimmers in ATMs, so bad actors move towards gas pump skimmers."

Matthew O'Neill, Agent, Secret Service

The Costs are Real

“Gas stations are the lowest- hanging fruit for bad guys when it comes to skimming.”

Matt Schulz, Chief Industry Analyst, CompareCards

Fuel Transaction Value	\$75
Transaction Fee (4%)	\$3
Product Cost (71%)	\$53
Marketing & Operational Costs (25%)	\$19
Chargeback Fee (\$35-50+)	\$35
Total Cost to Retailer	\$185

Fraud losses = 2-3X of sale

Real-World Examples...

- Florida Jobber, 2 Sites, April-May 2019 Chargebacks – \$15,000
- Chicago Site Owner, August 2019 Chargebacks – \$5,500
- Phoenix Site Owner, September 2019 – \$3,600

Counterfeit Fraud Can Occur Without Warning

Actual examples of counterfeit fraud from US Forecourts

Months	1	2	3	4	5	6	7	8	9	10	11	12	TOTAL
Sites													
C-Store #1	\$0	\$85	\$0	\$0	\$122	\$53	\$0	\$64	\$189	\$783	\$211	\$3,565	\$5,072
C-Store #2	\$0	\$0	\$0	\$56	\$0	\$0	\$0	\$0	\$710	\$4,329	\$9,276	\$6,343	\$20,714
C-Store #3	\$0	\$0	\$0	\$0	\$25	\$37	\$0	\$0	\$2,438	\$3,411	\$7,043	\$4,010	\$16,964
C-Store #4	\$0	\$0	\$0	\$0	\$0	\$0	\$0	\$0	\$0	\$4,263	\$10,180	\$8,918	\$23,361
C-Store #5	\$0	\$0	\$0	\$0	\$0	\$0	\$0	\$0	\$0	\$0	\$48,032	\$53,147	\$101,179

Secret Service seeing foreign crime organizations move across Mexico border, trained to commit white-card fraud

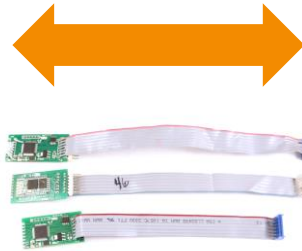
Waiting until the counterfeit fraud is 'bad enough' is not a plan!

Mag-Stripe Card Skimmers



Gas Pump Skimmers

<https://learn.sparkfun.com/tutorials/gas-pump-skimmers>



Prevention

- Physical inspection
- Dispenser electronic door access security
- Upgrade to Secure Hybrid (EMV) Card Readers

Prevention – Door Security



Unique Door Lock
& Key



- Wayne Smart Secure Access™
- Gilbarco Veeder-Root's Insite360™ + Door Entry Detection System

Prevention – EMV Chip Card Reader

Comprehensive Security Protections:

- Unauthorized removal detection
- Device authentication
- Encrypted interface and data links with chip and mag stripe data encryption

Mag-Stripe Only Mode

Most POS support disablement of chip mechanism until EMV software is ready



EMV Chip Reader – New Attacks

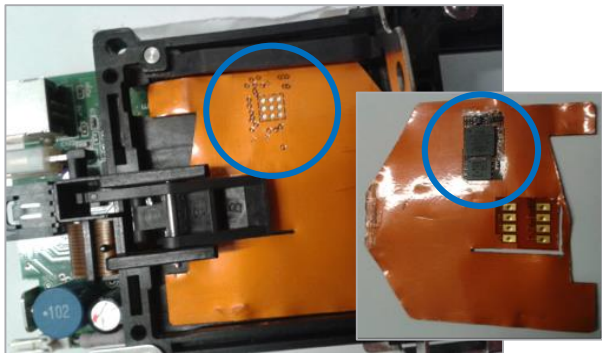


External Skimmers

- Molded replica of hybrid card reader front with built-in mag-stripe reader

Internal Shimmers

- Paper-thin film with mag-stripe reader
- Draws power from chip power contacts



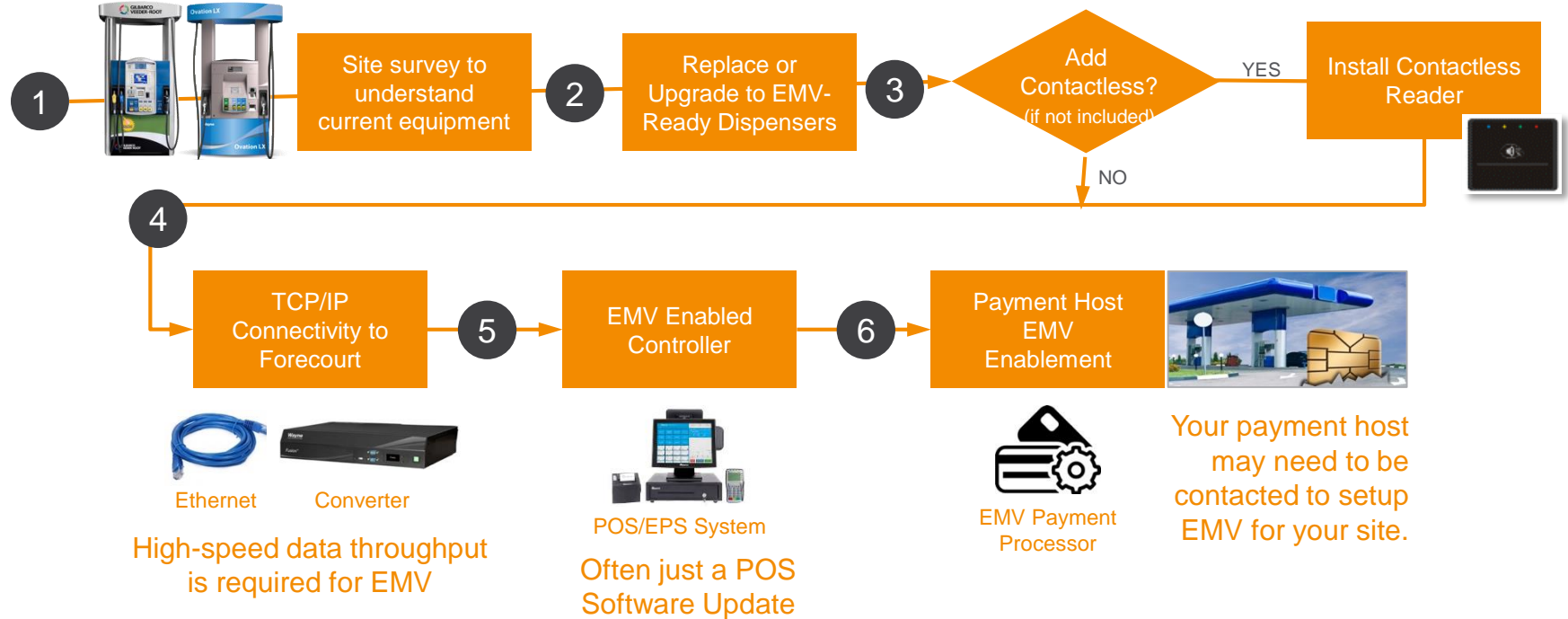
Prevention

- Visual inspection:
 - Reader should be flush-mounted; no external devices
 - Use flashlight to inspect card reader slot
 - Listen to cues from customers

EMV Enablement



6 Steps to Enable Forecourt EMV



EMV Site Activation

Dual Trip: Hands On

- 1 Hardware Deployed (Mag Only)
- 2 EMV Software Installation



- Hands on monitoring
- Increases logistical issues
- More uptime during conversion

Single Trip: POS Activated

- Hardware Deployed (Mag Only)
- POS-Distributed EMV Software



- Remote monitoring
- Synchronization challenges

Single Trip: “Big Bang”

- Hardware Deployed
EMV Software installed
and activated



- Hands on monitoring
- Logistical and synchronization challenges

Outdoor EMV: Network Considerations

- Network security and compliance just got **more complex**
 - *New Ethernet/IP interfaces extended out to the forecourt for EMV solutions*
 - *Need **secure connections** to Internet and public cloud*
- IP network enablement of dispensers “changes the rules”, e..g.,
 - *Some solutions have very restrictive network firewall configurations and may require a Managed Network Service Provider to be in place*
- EMV updates and enhanced capabilities
 - *Payment kernels likely to require updates over the lifetime of the terminal*
 - *Similar network provides remote diagnostics, prompt management, and media capabilities*

Lessons Learned



Special Considerations - Permitting

- **Don't underestimate the time required to receive a permit when updating your sites to Forecourt EMV**
 - **California:** Permits can take anywhere from a couple of weeks to a year to obtain
 - Location dependent (Large metro areas take longer)
 - Scope of work dependent (Which areas of the site are being modified)
 - **All Other States/Districts:**
 - May also have similar permitting challenges – plan accordingly

**There are no provisions in the liability shift to deal with
“I'm waiting for a permit”**



Waiting to Upgrade Will Cost More

Project Costs for EMV Implementation...



Equipment Cost



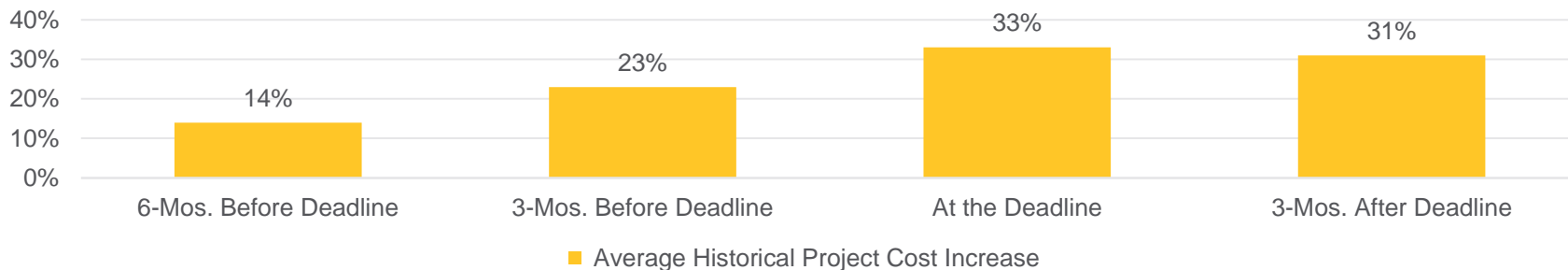
Installation Cost



Cost of Capital

Installation Costs (Labor) Tend to Increase Due to High Demand Leading up to an Industry-Wide Change

Historical Increase in Installation Cost During Major Industry/Regulatory Changes



Avoiding Increased Costs

1.	Reach out to your Equipment Supply Companies and Service Technicians	<ul style="list-style-type: none">• Ask if your equipment is ready to Process Forecourt EMV Transactions, or if it requires upgraded hardware (note – this often will require a site survey)
2.	Order your equipment early	<ul style="list-style-type: none">• The key to locking in an installation slot before costs rise is to order the necessary hardware
3.	Schedule the Technician(s) to Perform the EMV Upgrade (Q1 2020)	<ul style="list-style-type: none">• Remember – costs tend to increase six months prior (that's March 2020)• One Visit, Two Visits. Depending on the hardware and software at your site you may have a choice.

Training – Staff & Consumers

- Guided Messaging on the Dispenser's Display
 - Can be helpful; but requires the consumer to read the prompts
- Staff Training
 - Make sure your staff understands what changed
 - Ask them to look for consumers struggling at the forecourt
- Consider using 'EMV Ambassadors' at your sites
 - Bring the assistance to your customers on the forecourt
 - Be mindful of safety on the forecourt – bright safety vests

EMV Solutions

- Invenco
- Wayne
- Gilbarco



Invenco EMV Solutions

Invenco EMV Retrofit Solutions

Invenco's OPT retrofit kit options include barcode readers and NFC contactless as standard:

G6 – All in one, EMV option

- Gilbarco Encore 300 / 500 / 700
- Wayne Ovation I & II
- Gilbarco Advantage
- Wayne Vista
- Tokheim - Premier B & C
- Wayne Helix

G7 – 8", 12", 15" color touch screens

- Gilbarco Encore 300 / 500 / 700
- Wayne Ovation I & II
- Wayne Helix



Invenco Network Solutions



Options...

- Ethernet Switch & CAT-6
- Invenco Link high-speed two wire Ethernet (AES encrypted)

Invenco Purchase Options

Buy retrofit EMV solutions up front

- Experienced EMV outdoor retrofits
- Screen options / service models to fit your business



Or sign up for EMV Pay @ Pump as a Service:

- Up front installation
- Small fee per terminal per month
- All service and warranty included

Better ROI on EMV Investment

Media Advertising



- Ad revenue share
- Self-managed options
- Several media partner options

Food/In-Store Ordering



- Drive higher margin sales
- Streamlined customer experiences

Gamification Apps



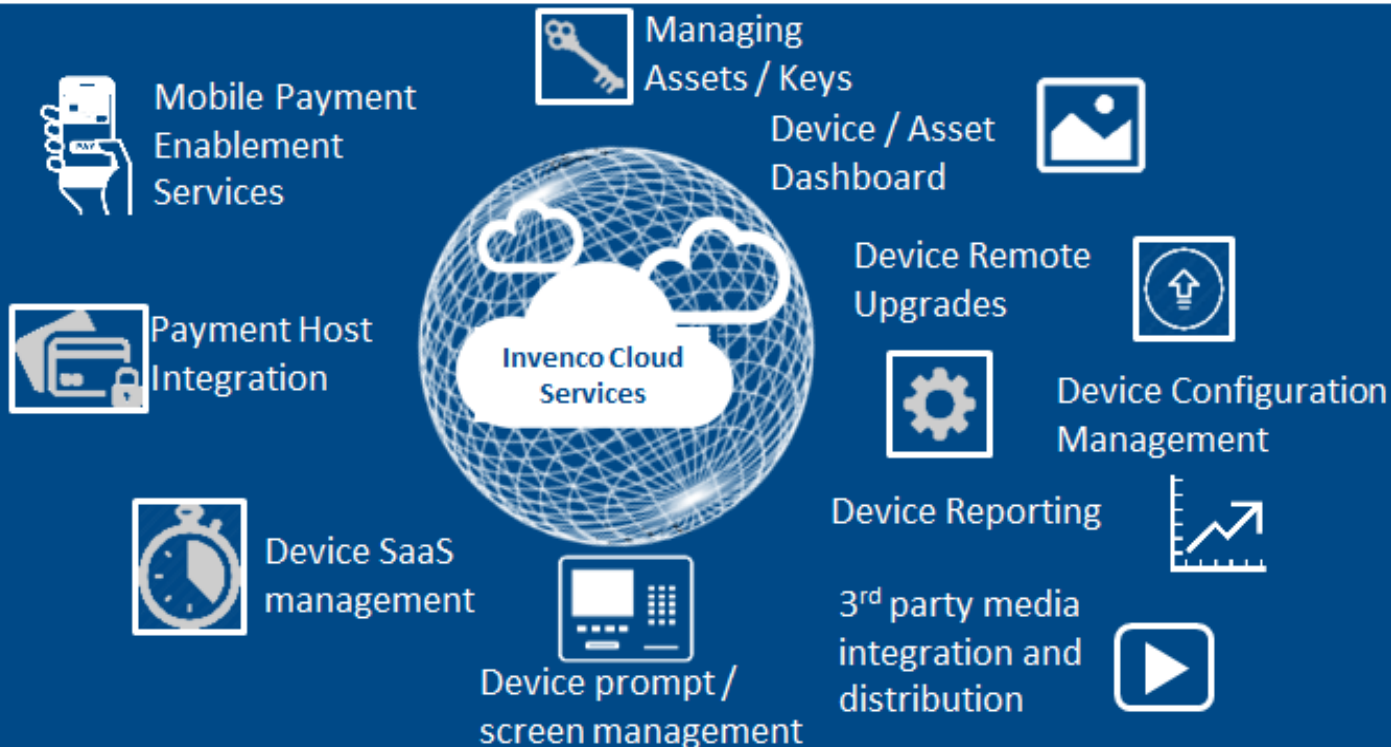
- Lottery sales
- Fuel discounting
- Instant rewards

Personalization Apps



- Personalized Experiences
- Loyalty auto-enrollment
- Beacon mobile engagement

PCI DSS Cloud Management





Wayne EMV Solutions

Wayne iX Pay™ EMV Upgrades



- iX Pay T7, 2/ & 3/Vista
- iX Pay T7, Gilbarco Advantage
- iX Pay T7, Encore 300/500

- Wireless options available
- Encore S ECIM added (Bezel and component replacement)



- 2/ & 3/Vista

- Complete bezel upgrade to 4/Vista solution
- Includes SPM PIN Pad, soft keys, EMV card reader, new grade selects & UPDs



iX Pay kits for Ovation...

- qCAT replacement
- iX boards
- SPM PIN Pads
- Mag-stripe card readers

- Wireless options available






iX Pay™ Encore 500/S & 700S ECIM



- Mid panel replaced, matching existing bezel
- Sales / Volume display, Push-to-Start buttons removed / reused
- Paper roll accessed through separate panel
- New power supply included
- New decal for Unit Price Displays needed



EMV TCP/IP Connectivity

Available Solutions	Recommended...
<div data-bbox="131 339 200 412">1</div> <div data-bbox="200 328 432 492"></div> <div data-bbox="471 361 838 459">Ethernet Switch (for CAT 5/6 Cable)</div>	<ul style="list-style-type: none">▪ Sites w/ existing CAT 5/6 cable▪ CAT cable can be easily pulled▪ Pump within 300 ft of store
<div data-bbox="131 550 200 623">2</div> <div data-bbox="175 539 417 696"></div> <div data-bbox="471 561 993 659">Wayne Connect™ IP-485® network solution</div>	<ul style="list-style-type: none">▪ Pulling cable costly or impossible▪ EMV payment traffic only OR▪ EMV + iOTV media
<div data-bbox="131 754 200 827">3</div> <div data-bbox="278 678 388 918"></div> <div data-bbox="471 757 993 856">Wireless encrypted TCP/IP communication solution</div>	<ul style="list-style-type: none">▪ Pulling cable costly or impossible OR▪ Not enough conduits/wiring▪ EMV + New Media solutions

Cloud Services

The iSense™ Remote Monitoring and Management Solution is an end-to-end solution that enables remote management of gas station dispensers.



Keep dispensers
up and running



Simplify service
and reduce
maintenance
costs



Boost security
and systems
integration



Boost security and systems integration

A variety of innovative features automate and streamline remote dispenser management. You get more security, more scalability—and more data you can do something with.



Protect against skimmers & card fraud with remote updates

Remotely access security reports via user-friendly interface

Easily export *PCI asset management reports*

Scalable ability to easily add as many dispensers as you need

Gain centralized, easy access to all your site-level information



GILBARCO
VEEDER-ROOT

Gilbarco EMV Solutions

Gilbarco - EMV Migration Checklists

To streamline the upgrade process, we compiled a checklist for dispenser models already deployed in the field

Encore® 700 S Dispensers

- ☐ EMV hybrid (chip and magnetic stripe) card reader
- ☐ High-speed site connectivity
- ☐ EMV software upgrade

Advantage, Encore® 300, 500, and S Dispensers

- ☐ Purchase
 - ☐ New Encore® 700 S, or
 - ☐ FlexPay™ IV CRIND® retrofit
- ☐ High-Speed site connectivity
- ☐ Future EMV software upgrade (in conjunction with POS)
- ☐ Reimage Kit Options (applies to retrofit kit only)



Gilbarco - EMV Hardware Options

New Dispenser Gilbarco Encore 700S



- Reduced Total Cost of Ownership
- Future Proof with Cloud Services
- Fuel Flexibility – Including E25 & E85
- Enhanced Security

Upgrade Kits Gilbarco FlexPay IV

	The Advantage	Encore® 300	Encore® 500	Encore® S	Encore® S ECIM
Dispenser					
Prod Years	1990-2003	2002-2013	2000-2005	2006-2007	2008-Present
FlexPay™ IV Retrofit Kit					

Gilbarco – Connectivity and Point of Sale

FlexPay Connect V2

- **Option1:** Use FlexPay Connect v2 with existing wiring
 - Eliminate the cost of breaking concrete
 - Works with existing legacy 2-wire



- **Option2:** Install Ethernet CAT5e/CAT6 cabling
 - Length limitation of 300 ft.

Passport Point of Sale

- Forecourt EMV support for nearly two years on many networks
- Talk to your local Gilbarco ASC or Distributor about the EMV software update or to quote a new system



Insite360 Cloud Services

Cloud Based Software Suite

Increase Efficiency, Lower Costs
and Prevent Loss in Your
Fueling & Retail Operations



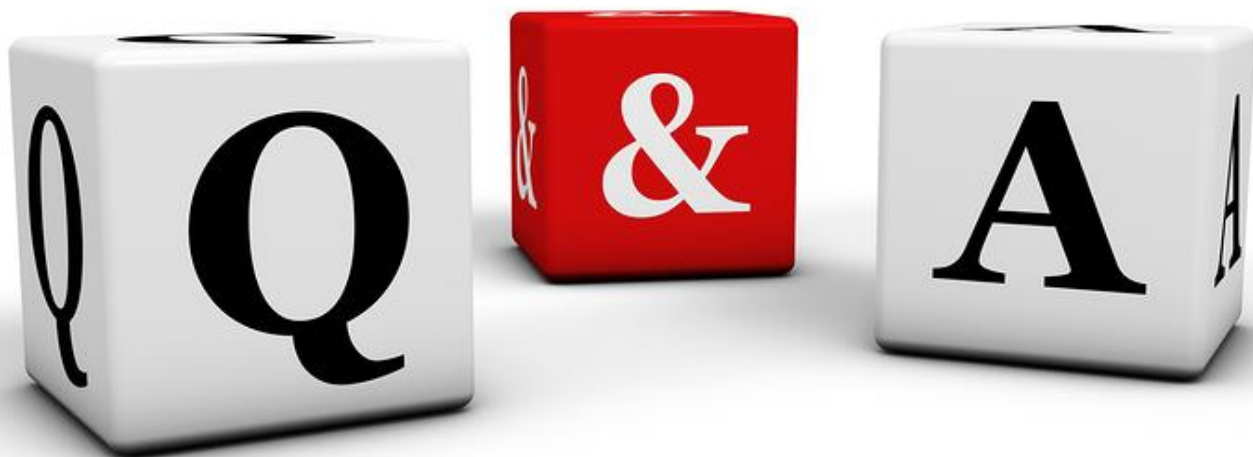
Gilbarco - Additional EMV Information

EMV Migration Guide:

- <https://www.gilbarco.com/us/emv-migration-guide>

Products:

- <https://www.gilbarco.com/us/products/retail-fuel-dispensers>
- <https://www.gilbarco.com/us/products/forecourt-payment>
- <https://www.insite360suite.com/>
- <https://www.gilbarco.com/us/products/c-store-solution/point-sale-pos-systems>



Resources

Conexus.org

- Resources/EMV Resources (Resource Guide, Survey Results)

Coming soon: Risk vs Reward Tool

- Webinars (webinars@conexus.org)

Secure Technology Alliance/US Payments Forum

<https://www.emv-connection.com/emv-resources/>

Visa.com

- Visa Payment Acceptance Best Practices for US Retail Petroleum Merchants
usa.visa.com/dam/VCOM/regional/na/us/support-legal/documents/visa-petroleum-best-practices.pdf

- Website: www.conexxus.org
- Email: info@conexxus.org
- LinkedIn Profile: [Conexxus.org](https://www.linkedin.com/company/conexxus.org)
- Follow us on Twitter: [@Conexxusonline](https://twitter.com/Conexxusonline)

DISCLAIMER: Conexxus does not endorse any products or services that may be described or mentioned in this presentation. The views and opinions expressed in this presentation are solely those of the speakers and not of Conexxus. By hosting this webinar, Conexxus is not providing any legal advice; if you have any questions about legal issues raised or discussed, you should seek the assistance of attorneys who are competent in that area.